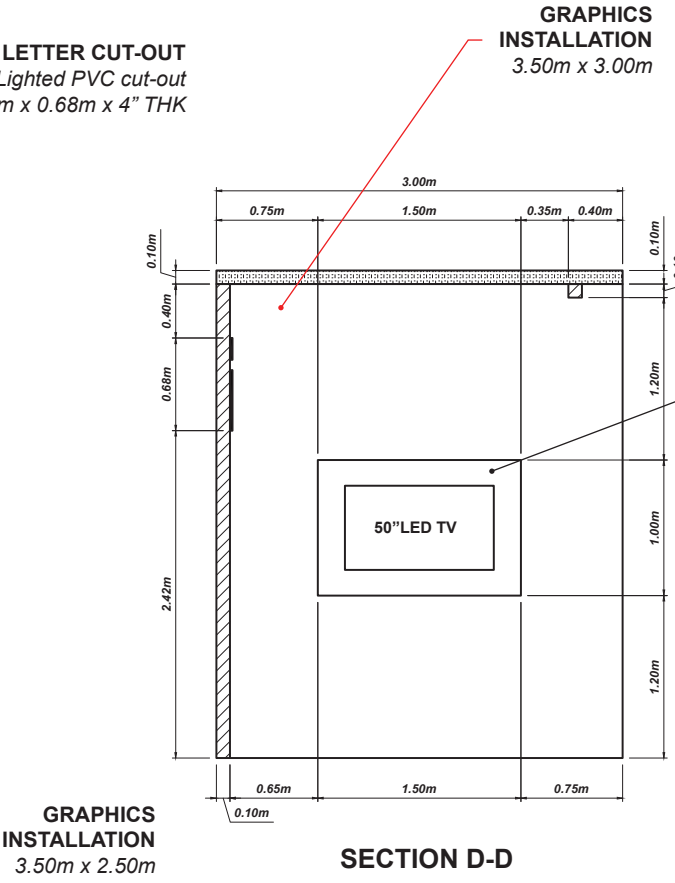
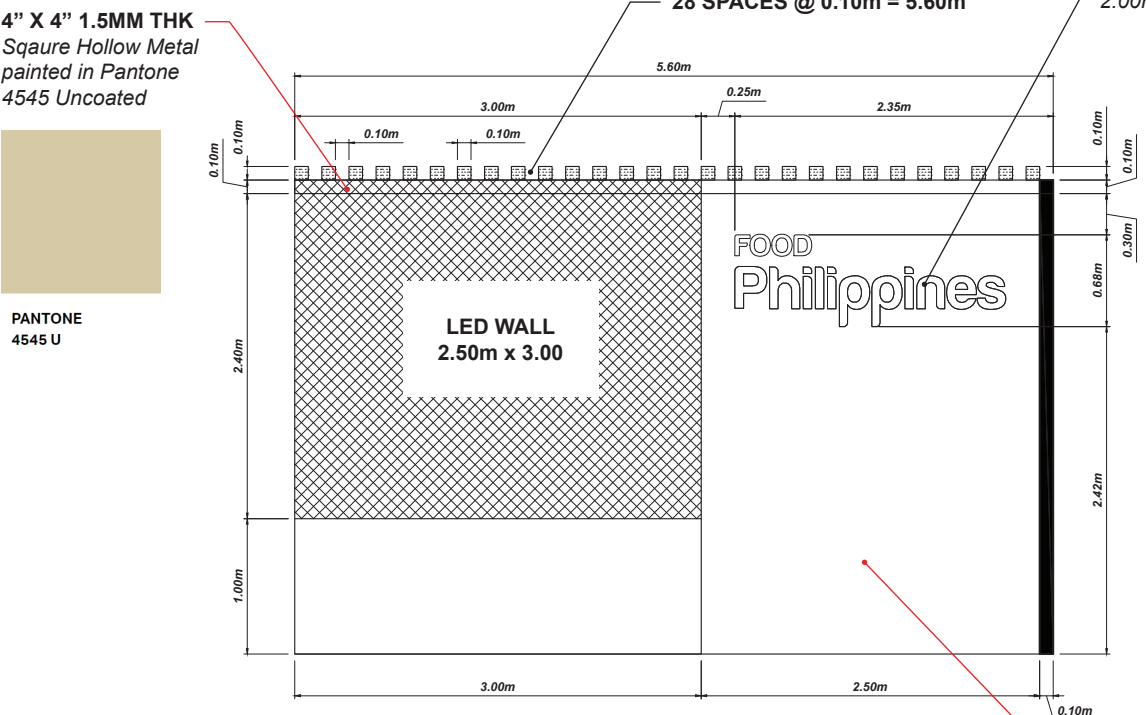
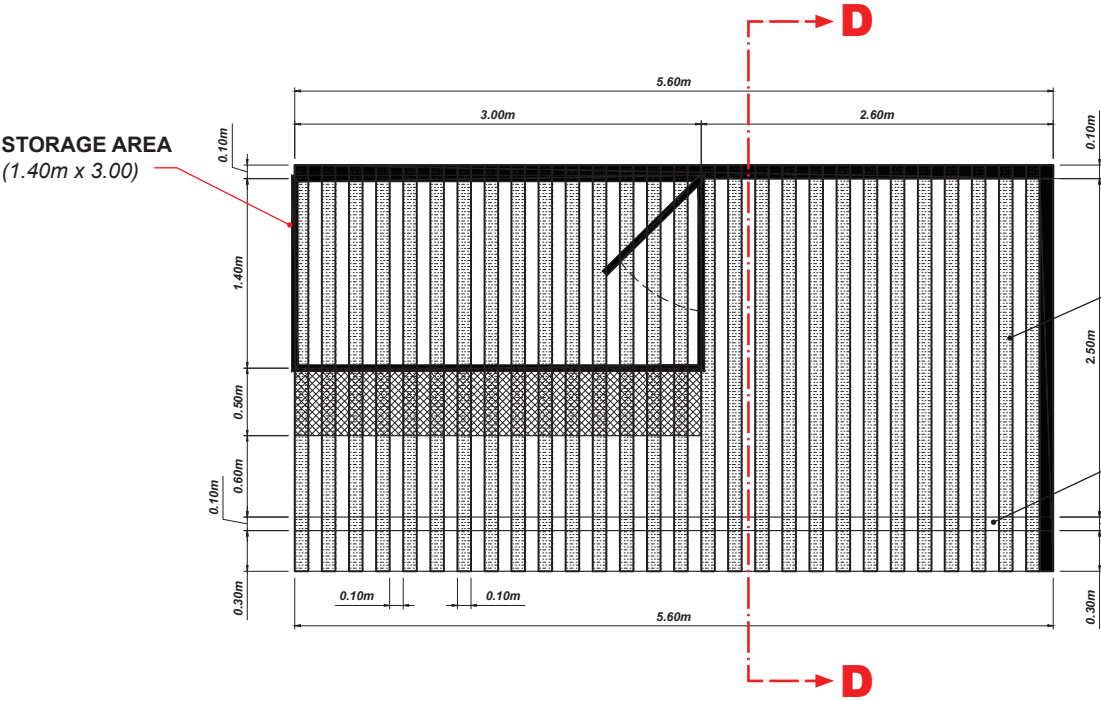
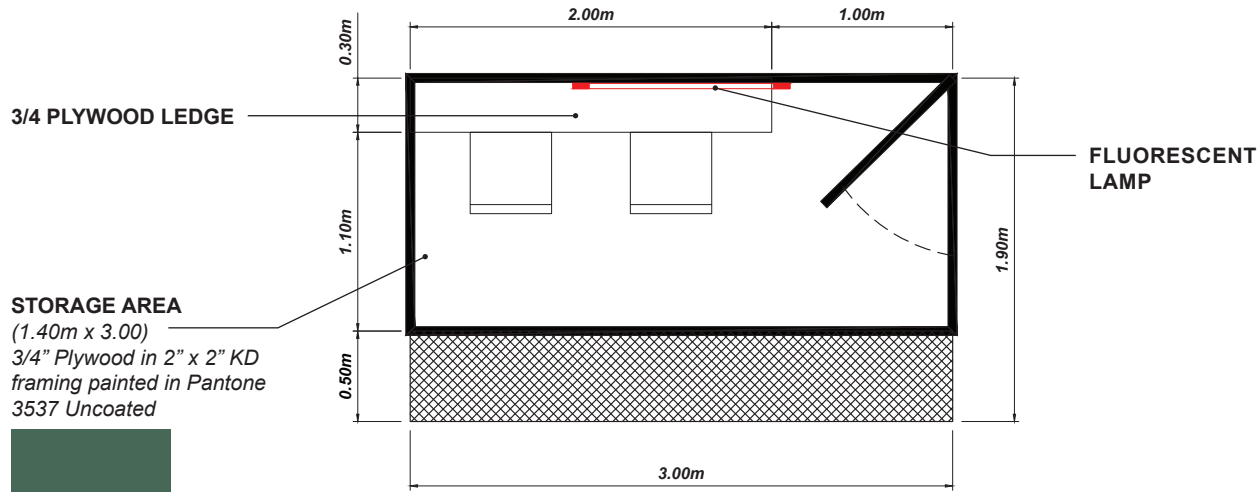


**S02 STRUCTURE  
ELEVATION VIEW**

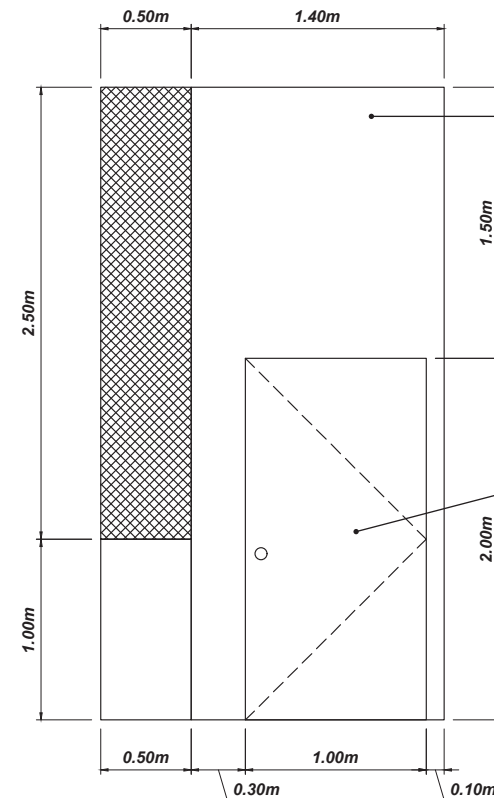
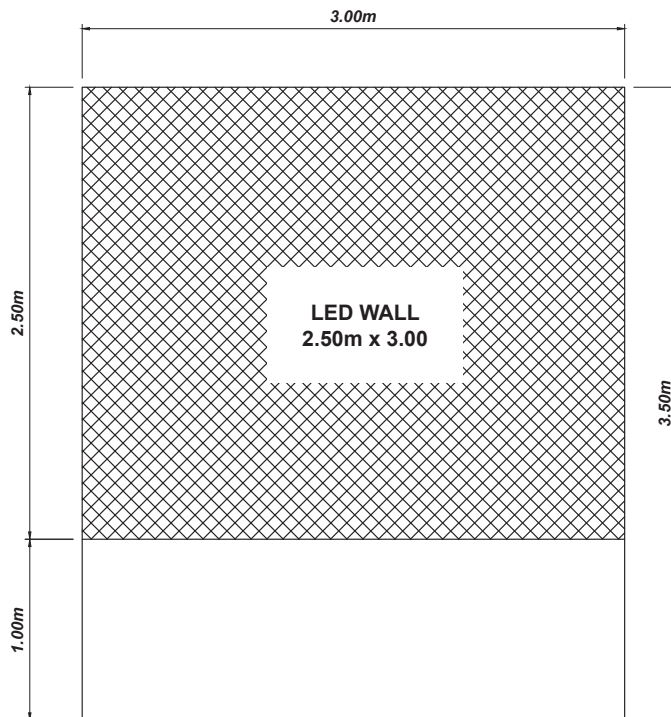


<p><b>CDEM</b> EXHIBITION AND DESIGN DIVISION</p>		
PROJECT: GULFOOD 2021		
TITLE: PHILIPPINES PAVILION		
LOCATION: DWTC, UAE		
CONTENT: DETAILS	DESIGNER: MIR	
DATE: 02/08/2021	REVISION: 00	SHEET NO: 8

**STORAGE AREA  
ELEVATION VIEW**



PANTONE  
3537 U



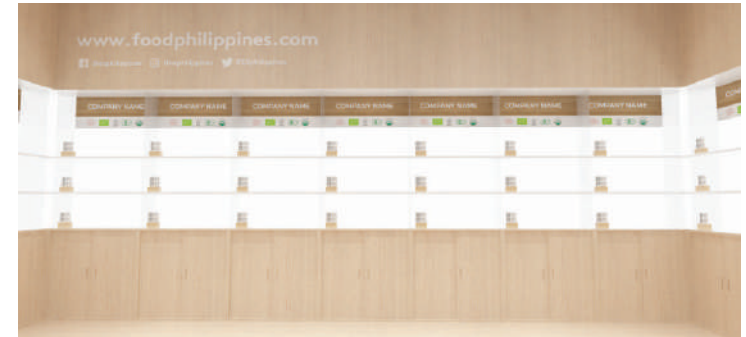
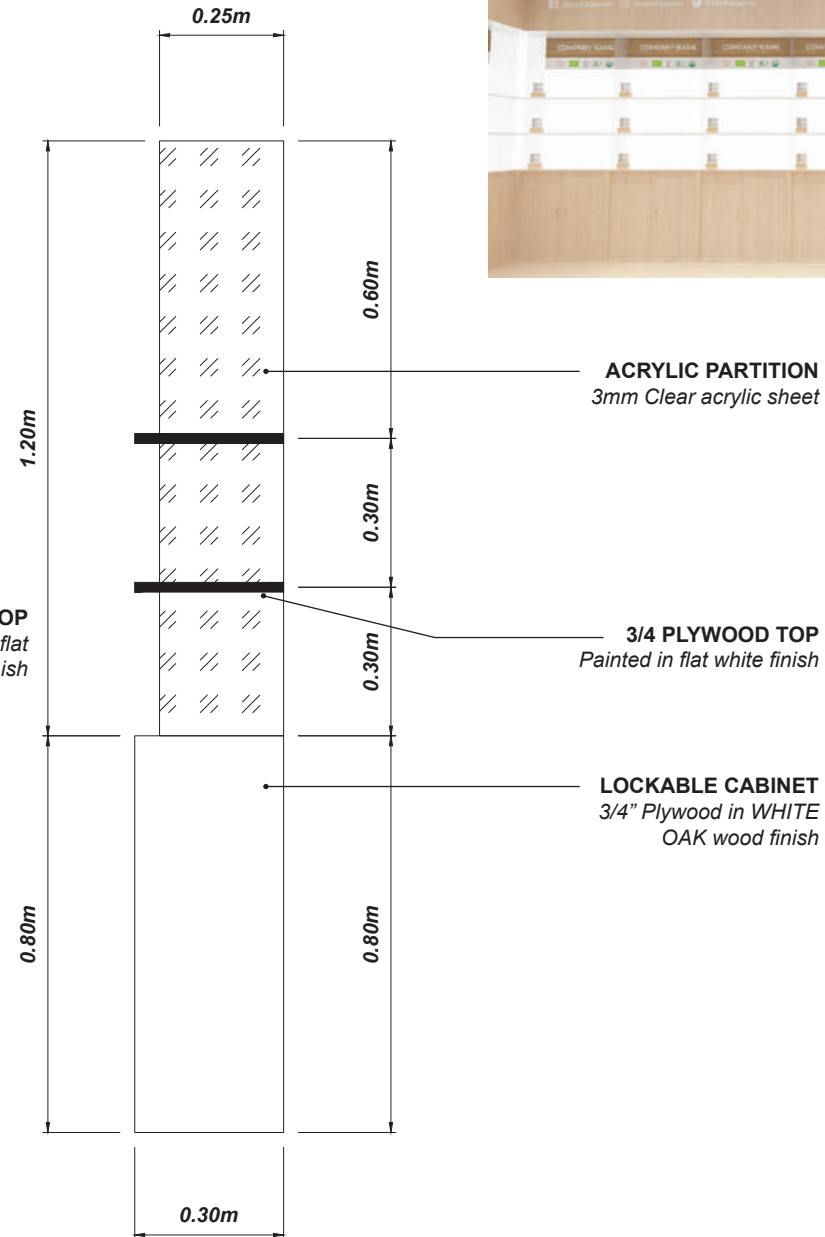
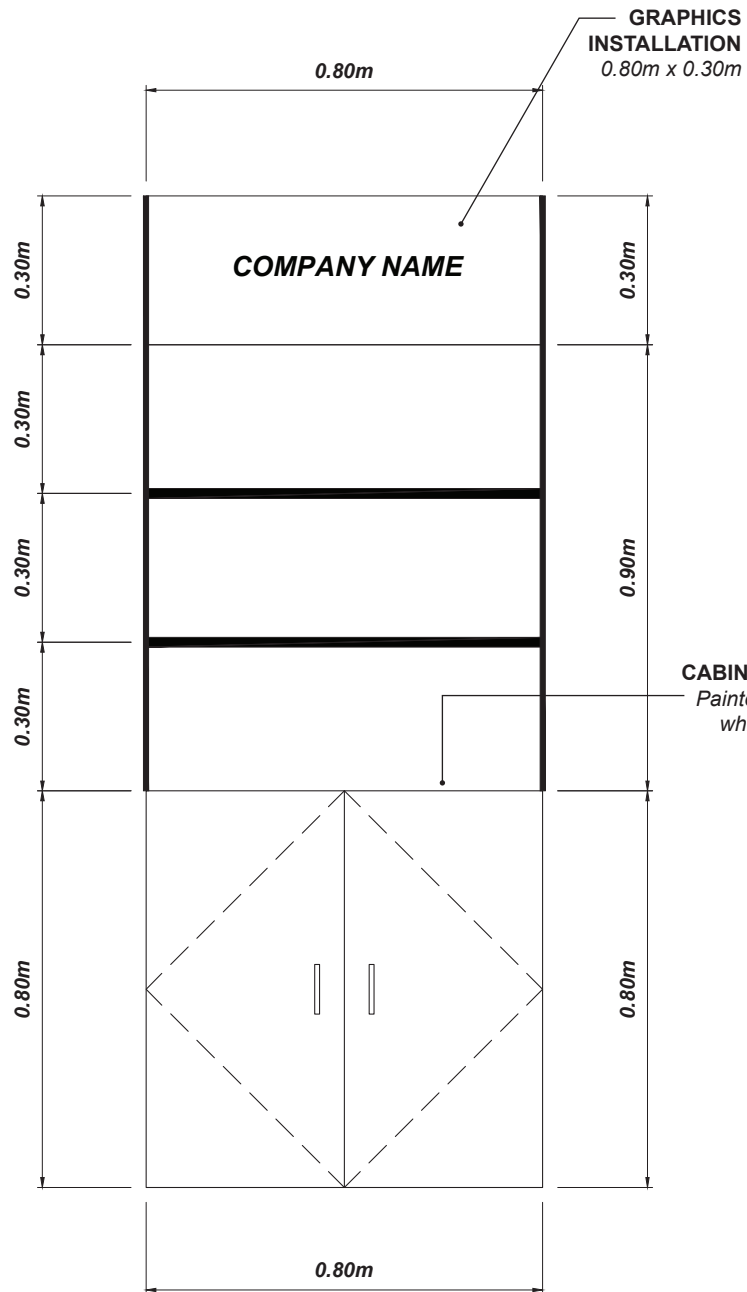
STORAGE AREA  
(1.40m x 3.00)  
3/4" Plywood in 2" x 2" KD framing painted in Pantone 3537 Uncoated



PANTONE  
3537 U

PROJECT: GULFOOD 2021		
TITLE: PHILIPPINES PAVILION		
LOCATION: DWTC, UAE		
CONTENT: DETAILS	DESIGNER: MIR	
DATE: 02/08/2021	REVISION: 00	SHEET NO: 9

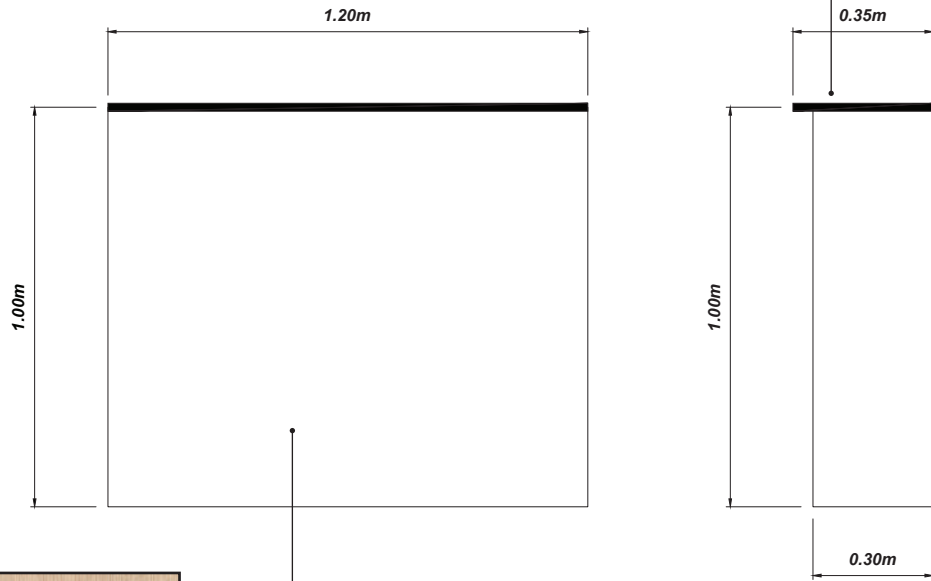
**PRODUCT SHOWCASE  
ELEVATION VIEW**



<b>CDEM</b> EXHIBITION AND DESIGN DIVISION		
PROJECT: GULFOOD 2021		
TITLE: PHILIPPINES PAVILION		
LOCATION: DWTC, UAE		
CONTENT: <b>DETAILS</b>	DESIGNER: <b>MIR</b>	
DATE: 02/08/2021	REVISION: <b>00</b>	SHEET NO: <b>10</b>

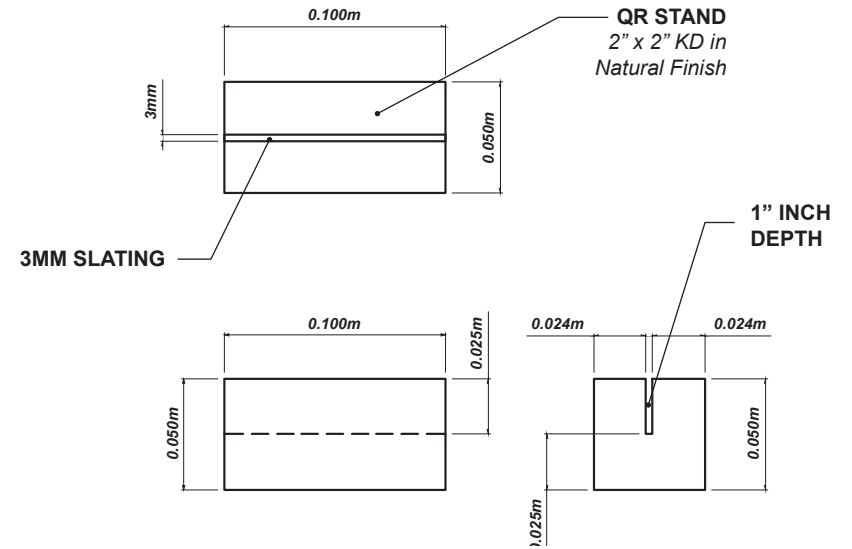
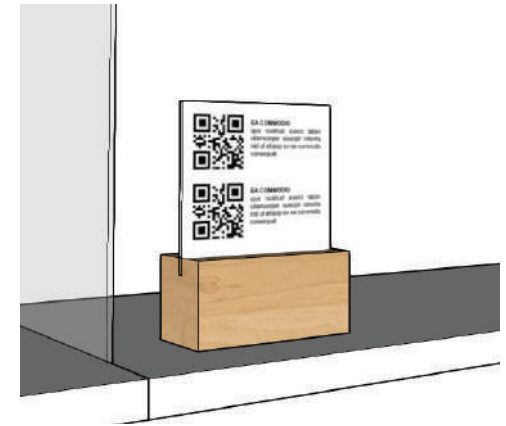
**RECEPTION COUNTER  
1 UNIT**

**COUNTER TOP**  
3/4" Plywood Painted  
in flat white finish



**RECEPTION COUNTER**  
3/4" Plywood in WHITE  
OAK wood finish

**QR CODE STAND  
39 UNITS**



<p><b>EXHIBITION AND DESIGN DIVISION</b></p>		
PROJECT: GULFOOD 2021		
TITLE: PHILIPPINES PAVILION		
LOCATION: DWTC, UAE		
CONTENT:	DESIGNER:	
<b>DETAILS</b>	<b>MIR</b>	
DATE:	REVISION:	SHEET NO:
02/08/2021	00	11

**ELECTRICAL / LIGHTING**

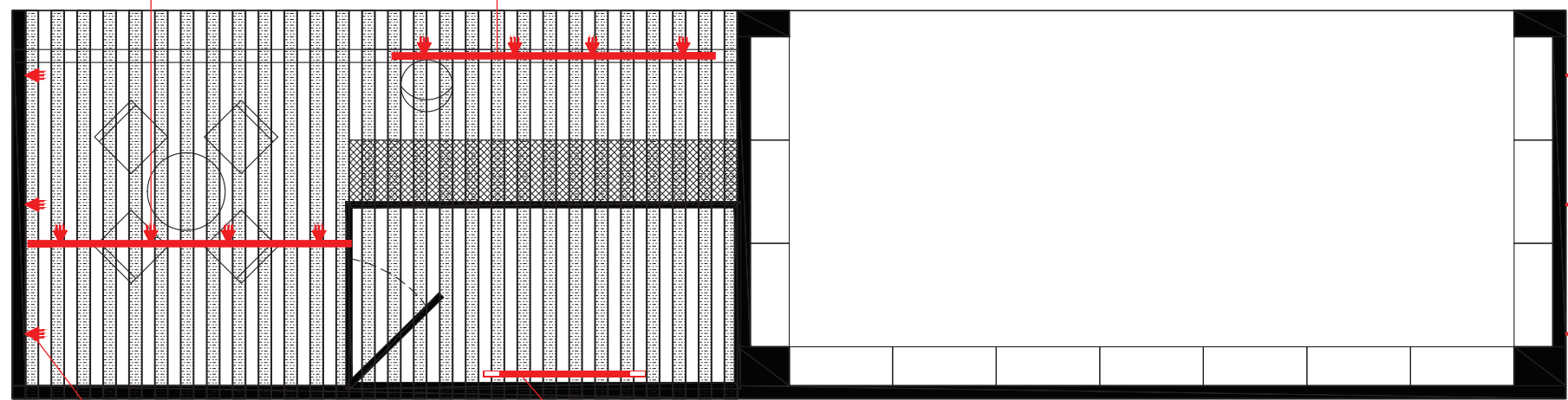
▲ 6 UNITS - 20W LED SPOTLIGHT (Warm White)

—▲▲▲▲ 2 SETS - 20W TRACK LIGHT (Warm White) WITH 2.50m TRACK BAR

— 1 UNIT - FLOURECENT LAMP

TRACKLIGHT  
Elevation Level @3.40mH

TRACKLIGHT  
Elevation Level @3.40mH



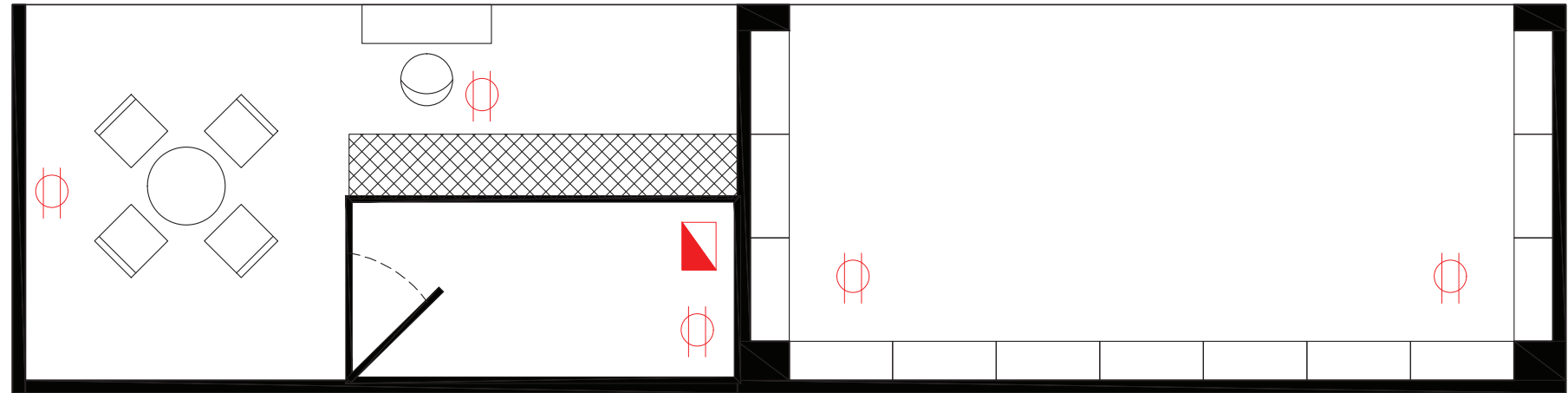
LED SPOTLIGHT  
Elevation Level @ 3.50mH

FLOURECENT LAMP  
Elevation Level @ 3.50mH

LED SPOTLIGHT  
Elevation Level @ 5.00mH

⊕ 5 UNITS - 3 GANG CONVENIENCE OUTLET

▴ 2 UNITS - CIRCUIT BRAKER (CONTRACTOR TO PROVIDE RATING)



 EXHIBITION AND DESIGN DIVISION		
PROJECT: GULFOOD 2021		
TITLE: PHILIPPINES PAVILION		
LOCATION: DWTC, UAE		
CONTENT: DETAILS	DESIGNER: MIR	
DATE: 02/08/2021	REVISION: 00	SHEET NO: 12

**CHECKLIST**

<b>I. MAIN CONSTRUCTION / FABRICATION / INSTALLATION / DISMANTLING</b>		<b>TOTAL QTY.</b>
I.A) PAVILION FLOORING - RAISED FLOORING WHITE OAK	SEE DETAILS	18.10 SQ.M.
I.B) PAVILION CARPET - CHARCOAL GREY NEEDLE PUNCH CARPET	SEE DETAILS	17.10 SQ.M.
I.C) PAVILION STRUCTURE	SEE DETAILS	1 LOT
I.D) STORAGE AREA	SEE DETAILS	1 LOT
I.E) EXHIBITORS PRODUCT SHOWCASE	SEE DETAILS	13 UNITS
I.F) RECEPTION COUNTER	SEE DETAILS	1 UNIT
I.G) QR CODE STAND	SEE DETAILS	39 UNITS

<b>II. ELECTRICAL &amp; LIGHTINGS</b>		<b>TOTAL QTY.</b>
II.A) FLOURECENT LAMP		1 UNIT
II.B) 20W LED SPOTLIGHT	SEE DETAILS	6 UNITS
II.C) 20W WARM WHITE TRACK LIGHT WHITE CASING	SEE DETAILS	8 UNITS
II.D) 2.50m WHITE TRACK BAR	SEE DETAILS	2 UNITS
II.E) T8 LED TUBE 10 - 12W Warm White	SEE DETAILS	12 UNITS
II.F) T8 LED TUBE 20 - 25W Warm White	SEE DETAILS	4 UNITS
II.G) RECESSED LED LIGHT 25W Warm White	SEE DETAILS	12 UNITS
II.H) CIRCUIT BREAKER - CONTRACTOR TO PROVIDE RATING		2 UNITS
II.I) 3 GANG CONVENIENCE OUTLET / 3 PRONG CONVENIENCE OUTLET		5 UNITS
<b>II.J) PAVILION ELECTRICAL CONSUMPTION (WHOLE DURATION OF THE SHOW - INGRESS TO EVENT PROPER TO EGRESS)</b>		<b>1 LOT</b>

<b>III. FURNITURE RENTAL</b>		<b>TOTAL QTY.</b>
III.A) IKEA STIG BARSTOOL		2 UNITS
III.B) WHITE TOP ROUND TABLE - 60CM DIA.		1 UNIT
III.C) STACKABLE CHAIR		6 UNITS



PROJECT: GULFOOD 2021		
TITLE: PHILIPPINES PAVILION		
LOCATION: DWTC, UAE		
CONTENT: DETAILS	DESIGNER: MIR	
DATE: 02/08/2021	REVISION: 00	SHEET NO: 13



**CHECKLIST**



IV. EQUIPMENT, PROPS RENTAL & MANPOWER		TOTAL QTY.
IV.A) SMALL SIZE TRASH BIN WITH LID AND GARBAGE BAG (BLACK OR CHROME)		3 PCS.
IV.B) HOT AND COLD WATER DISPENSER (FLOOR STANDING)		1 UNIT
IV.C) WATER GALLON PER DAY (5 GAL./DAY)		20 GAL.
IV.D) COMMERCIAL COFFEE MAKER (80 TO 100 CUPS)		1 SET
IV.E) PAPER CUPS & STIRRER		600 CUPS/SET
IV.F) COFFEE BAG, CREAMER & SUGAR WITH CONDIMETS ORGANIZER (ANY BRAND)		6 BAGS
<b>IV.G) 50" LED TV</b>	<b>SEE DETAILS</b>	<b>2 UNITS</b>
<b>IV.H) Hauling in of product samples delivered by distributors</b>	<b>4 Helper</b>	<b>4 PAX.</b>
<b>from outside the venue to Philippine booth (Rashid Hall R-172) on 20 February 2021 (ingress)</b>		
IV.I) LED WALL PANEL (3.00m x 2.50m)	SEE DETAILS	1 LOT

V. GRAPHICS AND LETTER CUTOUTS		TOTAL QTY.
V.A) DIGITAL STICKER CUT-OUT (5 SQ.M.)		1 UNIT
V.B) 4" PVC/WOODEN LETTER CUT-OUT MOUNTED ON CLEAR ACRYLIC BACKING (5.20m x 0.95m)	SEE DETAILS	1 UNIT
V.C) 4" LIGHTED PVC LETTER CUT-OUT (2.00m x 0.68m)		1 UNIT
V.D) DIGITAL PRINT STICKER GRAPHICS ON FOAMBOARD (3.50m x 2.50m)		1 UNIT
V.E) DIGITAL PRINT STICKER GRAPHICS ON FOAMBOARD (3.50m x 3.00m)		1 UNIT
V.F) DIGITAL PRINT STICKER GRAPHICS ON FOAMBOARD (0.80m x 0.30m)	COMPANY NAME	13 UNITS
V.G) DIGITAL PRINT STICKER GRAPHICS ON FOAMBOARD (0.10m x 0.12m)	QR CODES	39 UNITS
V.H) DIGITAL PRINT STICKER GRAPHICS (10 SQ.M.)	SOCIAL DISTANCING STICKERS	1 UNIT

	PROJECT:	GULFOOD 2021	CONTENT:	DETAILS	
	TITLE:	PHILIPPINE PAVILION	DESIGNER:	MIR	
DATE:	02/08/2021	REVISION:	00	LOCATION:	DUBAI WORLD TRADE CENTER
				SHEET NO.:	14